


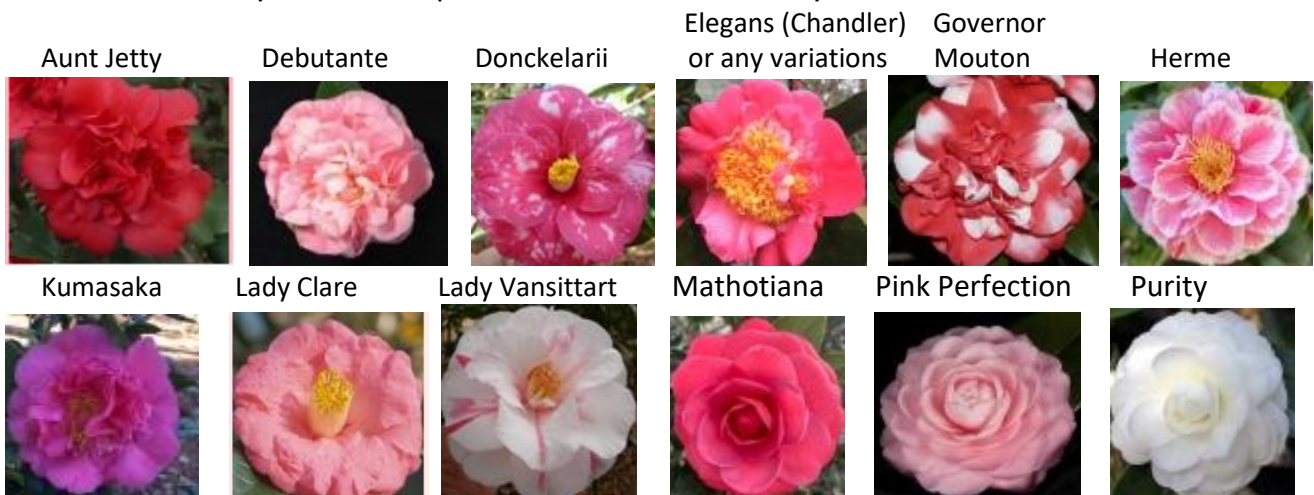


I was recently asked about camellia varieties that are cold hardy. A search of the American Camellia Society (ACS) website and the nomenclature showed that when a camellia is named most 'cold hardy' ones will have the following key words:

- Japonicas with the "April" in the name. We have April Remembered in our inventory, notice the ACS document reflects, 'Other Information: Cold hardy.'
- Non-Reticulata Hybrids with the word **Winter, Arctic or Ice** in its name.
- Any camellia with the word "**Snow**" included in the name.

April Remembered																											
	<table border="1"> <tr> <td>Species:</td> <td>Japonica</td> </tr> <tr> <td>Color:</td> <td>Cream center to pink shaded edges with yellow anthers and cream filaments</td> </tr> <tr> <td>Form:</td> <td>Semidouble</td> </tr> <tr> <td>Size:</td> <td>Large</td> </tr> <tr> <td>Bloom Season:</td> <td>E-L</td> </tr> <tr> <td>Growth Rate:</td> <td>Vigorous growth</td> </tr> <tr> <td>Leaf Characteristics:</td> <td>Dark green</td> </tr> <tr> <td>Originator:</td> <td>Clifford R. Parks</td> </tr> <tr> <td>Place of Origination:</td> <td>U.S. - Chapel Hill, North Carolina</td> </tr> <tr> <td>Year of Registration / Origination:</td> <td>1995 - ACS Registration #2342</td> </tr> <tr> <td>Heritage:</td> <td>Japonica 'Berenice Boddy' x Japonica 'Dr. Tinsley'</td> </tr> <tr> <td>Other Information:</td> <td>Cold hardy ←</td> </tr> <tr> <td>Photographer:</td> <td>John Swanson</td> </tr> </table>	Species:	Japonica	Color:	Cream center to pink shaded edges with yellow anthers and cream filaments	Form:	Semidouble	Size:	Large	Bloom Season:	E-L	Growth Rate:	Vigorous growth	Leaf Characteristics:	Dark green	Originator:	Clifford R. Parks	Place of Origination:	U.S. - Chapel Hill, North Carolina	Year of Registration / Origination:	1995 - ACS Registration #2342	Heritage:	Japonica 'Berenice Boddy' x Japonica 'Dr. Tinsley'	Other Information:	Cold hardy ←	Photographer:	John Swanson
Species:	Japonica																										
Color:	Cream center to pink shaded edges with yellow anthers and cream filaments																										
Form:	Semidouble																										
Size:	Large																										
Bloom Season:	E-L																										
Growth Rate:	Vigorous growth																										
Leaf Characteristics:	Dark green																										
Originator:	Clifford R. Parks																										
Place of Origination:	U.S. - Chapel Hill, North Carolina																										
Year of Registration / Origination:	1995 - ACS Registration #2342																										
Heritage:	Japonica 'Berenice Boddy' x Japonica 'Dr. Tinsley'																										
Other Information:	Cold hardy ←																										
Photographer:	John Swanson																										

Following are other camellias that are cold hardy without these key words. This list is not exclusive but many of our antique camellias are cold hardy:



Hybridizers, Dr. William Ackerman, Dr. Clifford Parks, and Longwood Gardens have introduced many cold hardy camellias. Though some of the cold hardy camellias could be found locally, I would not suggest taking a plant from Florida Zone 9 and planting it in Ohio Zone 6. I would at least protect it the first year so that it can adapt to the weather. Planting them on a protected south facing would help also. - Greg Taylor / President

Upcoming Events

Saturday Feb. 10th - UWF Garden Clean Up starting at 9am. We need to pickup spent blooms and branches, scrub bricks for future presentations and tours. Bring your gloves, knee pads, and yard waste container.

Wednesday Feb 14th – UWF Commemorates the funds raised to support the UWF Camellia Garden at 10am. RSVP by emailing AdvancementEvents@uwf.edu.



JOIN US
**Cocoa &
Camellias**

WEDNESDAY, FEBRUARY 14
10 AM

UWF CAMELLIA GARDEN
1100 UNIVERSITY PKWY
PENSACOLA FL 32514





Come together with the Retired Employees Association and the Pensacola Camellia Club to commemorate the funds raised in support of the UWF Camellia Garden. RSVP to AdvancementEvents@uwf.edu by Monday, February 12.

 Retired Employees Association
UNIVERSITY of WEST FLORIDA

Tuesday Feb. 20th – General Meeting: Jane Benson short presentation, ‘Where Are You?’ plus ‘Questions& Answer Session’ by Paul Bruno, John Davy, and Skip Vogelsang. Location: [Garden Center](#), (1850 N. 9th Avenue, Pensacola) 6:30pm for social, 7:00 pm program. Feel free to bring a treat to share, coffee will be provided.

- Tonight we will vote on the 2024-2025 slate of Officers and Board.
Officers: President – Greg Taylor,
1st Vice President - Show Chairperson, Christi Hankins,
2nd Vice President - Programs, John Davy
3rd Vice President - Membership, Rebecca Sherman,
Treasurer – Skip Vogelsang, Secretary –Kristin Bennett, Past Pres - Trumin Brown,
The following will serve on the Board of Directors: Jane Benson, Debbie Brown, Paul Bruno, Regan Hoffman, Carolyn Pulford, Louise Seitz, & Mack Thetford.
- At the meeting, we would like to **WELCOME our 60 NEW MEMBERS** by asking them to wear the **Red** outlined name tag so our members know to greet you and introduce themselves. A new member is anyone that joined in Nov. 2023 – Nov. of 2024. New members, by attending the meeting your name will be included in a ‘**New Members ONLY Raffle**’ for a camellia plant. We also have a camellia plants raffle for everyone to participate, raffle tickets are a \$1.00 per chance or \$5.00 for 6 chances. See Lee Vanderpool to purchase your raffle tickets, the proceeds support our club meetings.
- Please pay your 2024 membership dues of \$10 by check or cash tonight. Debbie Brown, VP of Membership will accept your money and review your contact information to keep you informed of club events. If you have questions for Debbie about your membership you can reach her at 850-932-0370. If you’re not attending the Feb. 20th meeting please mail your payment to Pensacola Camellia Club, P.O. Box 707 Pensacola, FL, 32591. Lifetime membership is \$100.

• ***Tonight we will be raffling off the following camellias.***

	<p>Bob Hope Species: Japonica Color: Black Red With Bright Yellow Anthers And Pinkish Filaments Form: Semidouble With Irregular Petals Size: Large</p>		<p>Greensboro Red Species: Japonica Color: Light Red With Dark Yellow Anthers And Whitish Filaments Form: Semidouble Size: Medium</p>
	<p>Julia Species: Non-reticulata Hybrid Color: Lavender Pink And White Form: Rose Form Double To Formal Double Size: Medium To Large</p>		<p>Man Size Species: Japonica Color: White With Yellow Stamens Form: Anemone Form Size: Miniature To Small</p>

~~**Saturday Feb 24th** – UWF Garden Clean Up in preparation of Sunday’s Garden Tour see you at 9am. You know the tasks, pickup spent blooms & branches, and sweep the walkway to get ready for guests. CANCELLED – The Garden was cleaned for the Feb 14th UWF event.~~

Sunday Feb 25th – UWF Garden Tour and Plant Sales 12- 4pm. Come and greet our guests with your pruners to cut off their favorite bloom to take home. Explain to the guests how this garden came about and show off those Pensacola variety camellias as you walk them through the garden. You might want to assist members with the air layering demonstrations or light pruning demos. The UWF Student Ambassadors will be on hand to drive guests to and from the parking lot ‘W’ to make it easier for everyone to get to the garden. Trumin Brown can always need a hand with sales, plan to come and help out and enjoy this beautiful place while it is blooming.

Saturday Mar. 9th – If we don’t sell out of camellia plants prior to this date. We are invited to participate in ‘Celebrate the Outdoors Lawn and Garden Show’. Located at 1603 N. 12th Avenue, Pensacola, which runs from 8am -2pm, stay tuned and we will let you know if we are there or just walking through to check it out.

Tuesday Mar. 19th – **Annual Banquet** at V. Paul’s Italian Ristorante, 29 Palafox Place, Pensacola, Florida. Cash bar will open at 5:30pm with Happy Hour prices on alcohol, wine and beer, followed by dinner at 6:30pm. You do not have to be a member to attend; all family and friends are welcome to this celebration. Paul has generously waved the setup fees for the club and we will be paying \$45/per person that includes gratuity. Please make payment to: Pensacola Camellia Club and mailed to P.O. Box 707, Pensacola, FL 32591. Reservations should be in by March 13th. If you attend the meeting on Feb 19th and plan to attend please see Debbie Brown with your payment and save a stamp.



At the banquet the 2024-2025 Officers and Board Members will be sworn in, and the T. Morris Scholarship Award, ‘Person of The Year’ will be announced, along with Special Camellia plants available for auction.

We Sure Have Been Busy!

Member, Leland Leonard shares his woodworking skills at Quayside Gallery on the third Friday of each month. You know, 'Gallery Night,' downtown Pensacola takes ART to the streets with artists, music, and food for a taste of the Culture of Pensacola. Leland rolls out his woodworking lathe and demonstrates to the audience how he makes wooden vases. As you can see, when the Camellias are blooming, the vases are filled with his Camellias from his yard. The vases made that night are given away unfinished for visitors to stain. The Quayside Gallery also takes part in Palafox Market every Saturday at the south end, aka in Jackson Park, with various artist's items for sale. When Leland is there he includes our club's advertisements of upcoming events during Camellia season. Thank You Leland!



If you are sharing Pensacola Camellia Club information at various events that you attend please share with us. We can support your event or provide you with flyers of our future events too.

I think we may see some Daddy Mac camellias for sale in the future. Mack Thetford provided the greenhouse at UF Milton campus for the benefit of the club to graft on Saturday. I heard there are 200 grafts completed that day. Excellent!





Member Lee Vanderpool took the lead for Okaloosa County Arbor Day on Jan. 19th with the planting of a bald cypress at the Women Veteran Memorial at Veterans Park on Okaloosa Island hosted by the Destin Garden Club. Yes he contacted John Davy for the purchased of this special memorial plant.



PCC is invited annually to attend the Japanese New Year Festival at Wright Place which was on Jan. 20th. Instead of being in the lobby area with our plants to sell we had front row seats near the stage.

The place was packed with families and tasty Japanese food items. We educated their guests on Camellias, which are native plants of Japan & China.

PCC was at Palafox Market on Jan. 27th which was a hit with Magali Solinaho who purchased 8 plants for her mom. She joined the club and attended V. Paul's for 'Salute to the Camellia.' She attended and entered her blooms at the Novice Show on Feb 3rd and won 'Best Small in the Unknown Variety.'



We had 70 guest at V. Paul's for our 'Salute to Camellias'. Welcome new members; Hila Minshew & Terri Urquhart that joined that night.





Congrats to Greg Taylor! Saturday Feb 3rd Greg Taylor won his first ever, 'BEST IN SHOW' with his Ferris Wheel bloom at the Mississippi Gulf Coast Show. Greg has been representing our club at 6 shows since December as a Judge and as a winning competitor.

The Novice Camellia show at the NW Florida library was my first activity with the Camellia Club. I really didn't know what to expect so I just participated in set up on Friday and as an observer on Saturday. Every member in attendance was so kind and patient in

answering my questions and it turned out to be a fun day and I learned so much. I don't think I'm ready to enter my blooms in a juried show but I certainly will enter the next novice show! I kept this short... I need to go plant the three new camellias I bought at the show!. **Karan Llewellyn**



At the Community Show, Best in Show was 'Elaine's Betty Red Varigated' by Cindi McDonald. Best Heritage was 'Herme' by Maria Rosasco and Besh White was 'Leucantha' by Barb Del Costillo. More photos from the show are on our website. <https://pensacolacamellioclub.com/photo-galleries/>



Katherine Randall commented, 'The show for novice gardeners was fun, exciting, and very educational! I was happy to participate in setting up on Friday and entering my blooms on Saturday. I learned from judges the intricacies of how each bloom was judged and graded for their awards. I loved being surrounded by so many beautiful blooms.'