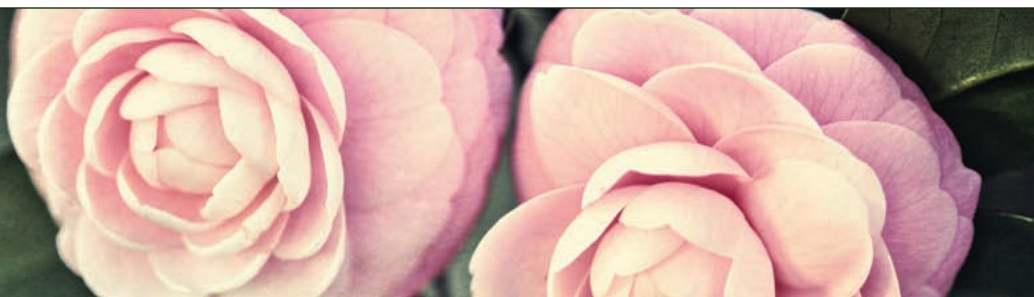


# The Pensacola Camellia

January 2015



Newsletter of the Pensacola Camellia Club—established 1937  
[PensacolaCamelliaClub.com](http://PensacolaCamelliaClub.com)

## President's Message

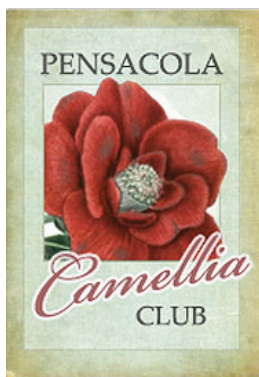
I hope everyone had a nice Holiday season, a Merry Christmas and a Happy New Years Celebration. On behalf of the Pensacola Camellia Club Board of Directors and myself, I wish everyone a Prosperous, Healthy, and Happy New Year, 2015! We had a very successful Camellia Program in December. Skip Vogelsang and his committee did a great job on our 76th Annual Camellia Show and I am sure all in attendance will agree it was another Great Flower Show. Thank you Skip! I also would like to thank all that helped with the show and as always point out the great refreshment / hospitality job that Jerri Smith and her team do. We surely do not want to miss anyone so please accept my good wishes to all that performed so well. Thanks.

We have a full calender coming up in the New Year, 2015, so lets all have fun and enjoy the beautiful "Winter Rose", the Camellia. We had a great workshop on Grafting and Air Layering on Saturday, Jan. 10th at the Langley Ave. - YMCA. Despite a little cold weather we had a nice turnout and I believe all of our visitors really enjoyed themselves. We had 6 new members join and plants sales went well. Thank You to all of the Club members who participated and made this a fun and productive event. In the newsletter you will find a list of upcoming events and I would like to ask all members to try to participate. It is lots of fun to attend these events and helps the club continue to be a leader in the Community. I would also ask that we continue to suggest joining our club to potential new members as we are almost to the 300 member mark! This would make us the largest club in the U.S.A... and we are the oldest... founded in 1937... and for my money we are surely the BEST!

As we all know we had a recent freeze that hurt a few flowers but now it looks as though most bushes are coming into full bloom and we should have some great flowers the next three months. Our next scheduled meeting is at the Garden Center on 9th ave. at 6:30 pm, Tuesday, Jan. 20th. Beth Bolles, our Agricultural County Agent will be the speaker and she is terrific.

Looking forward to seeing you at our next meeting and sharing some great flowers that I know you all are growing.

--- Best Regards, Paul Bruno



### Officers

- President - Paul Bruno
- 1st VP & Show Chair - Skip Vogelsang
- 2ndVP & Program Chair - Dick Sloan
- 3rd VP, Membership - Christi Hankins
- Secretary - Winkie Rhea
- Treasurer - Thekla Morris
- Past President - John Davy

### Board Members

- LeAnna Brennan
- Dick Hooton
- Dante Kahn
- Alan McMillan
- Dick Sloan
- Jerri Smith
- Dr. Mack Thetford

# Upcoming Events

## Programs

Programs are held at the Garden Center, 1850 N. Ninth Avenue on the third Tuesday of each month. Social/refreshment time is 6:30 with program beginning at 7:00 p.m. On January 20th, Beth Bolles speaks about camellia pests and control. The interested public is invited to this free event.

## PCC Garden Tours and Plant Sale

Saturday February 14 at UWF Camellia Garden and Godwin Property, Soundside Drive, Gulf Breeze. Tour Hours 9 a.m. to 2 p.m. Directions to the UWF Camellia Garden: drive to the extreme end of UWF's main thoroughfare, Campus Drive. Then park in parking lot "V." The UWF Camellia Garden is a short walk up the hill from the parking lot.

The Godwin property is on Soundside Drive in Gulf Breeze. Drive highway 98 East past Tiger Point. At Concord Presbyterian Church, turn right on Rt. 393, Soundside Drive. The Godwin property is about ¼ mile on Soundside Drive and location will be well marked.

## Judges' Training School

Saturday, February, 21st, 9am-3pm, Downtown Public Library, 229 N Spring St. Judge Vinson hopes to get 20 people for class. Note needs to go into Jan newsletter and a sign-up sheet for members' meeting. Judge Vinson and others to get required booklets and materials from ACS.

## PCC Community Camellia Show and Plant Sale

Saturday February 28, Downtown Public Library, 229 N Spring St. This show is designed to attract the "average" camellia gardener. Those who have won prizes at the December camellia show or other American Camellia Society adjudicated shows will not enter competitively but will bring in blooms for exhibit only. Show chair Skip Vogelsang encourages camellia gardeners to bring in blooms. Club members will help identify blooms, if possible. There is even a prize for best "unknown" bloom.

Bloom entry 8-10 a.m.

Public viewing 11 a.m. to 2 p.m.

Plant sales 9 a.m.-2 p.m.

## PCC Installation Banquet

V. Paul's Italian Ristorante, 29 Palafox Place, downtown Pensacola, Tuesday March 17th at 6:30 p.m. Cost \$25 (includes tips). Make reservations by Friday, March 10th. Phone Winkie Rhea 850-438-7270. Outgoing President Paul Bruno promises a delicious meal, musical entertainment and tables decorated with camellias which patrons may take home after the event.

## Membership Meeting

**6:30 Tuesday, January 20th - Garden Center**

# 76th Annual Camellia Show



PCC Member Jerri Smith contemplates assortment of gorgeous camellia blooms. Photo by Michael Spooneybarger.



Lynn Manthei greets participants at refreshment table. Photo by N. Vickers.



Blue ribbon winners. Photo by N. Vickers. Plant sales. Norma English at sales desk. Photo by N. Vickers.



C. japonica, Black Magic  
Photo by Michael Spooneybarger.



C. heimalis, Star Above Star  
Photo by Michael Spooneybarger.



Photos from Pensacola Camellia Club fundraiser At V. Paul's Italian Ristorante. Photos by N. Vickers.



Form Margaret E (winkie) Rhea, PCC Secretary:  
Let me give a "Shout Out" to our president, Paul Bruno. Last night's fundraiser at V. Paul's Italian Ristorante was so much fun ~ good music, good food and excellent company. There were about 100 people, including some from Mobile and other locations. Paul and his staff out did themselves to make the affair a wonderful experience. Thanks to all, members and friends, who turned out to support the PCC. Many thanks to Paul for his hard work and generosity, all profits go the PCC. Also, credit goes to all of the others who made the event such a success. Thanks again, everyone.

# CAMELLIAS AS LANDSCAPE PLANTS

## The Beginner's Collection

By J. D. Thomerson

I have discussed with many fellow camellian's that landscape companies seldom use camellias anymore. We have speculated on the reasons: camellias are more expensive than other plants, they grow more slowly, they are more prone to die the first year or two than many other plants, and many that have beautiful blooms are not vigorous pretty bushes when not in bloom. There are other reasons given but these are some of the ones I remember. Camellia show nuts like many of us sometimes care more about a pretty bloom than a pretty bush the many months it is not in bloom. However, this is not the case for the avid landscape



Seldom do you see beautiful camellias like this photo in newer subdivisions — what a shame.

owner that wants a beautiful yard 12 months of the year. I have thought for several years that perhaps we camellian's could promote perhaps a "bullet-proof" starter package for the average home owner that wants to add a few camellias to their landscape.

The list might be slightly different for the southeast compared to the west coast or folks further north that are limited to cold hardy selections. I will be brave and pick a starter package for folks in the southeast that want plants that are tough as nails, have pretty blooms, but also look good all year long.

### OK—Here's My Beginners Package

1 Everyone needs a nice sasanqua and what is better than **KANJIRO** to meet this need. There is a reason it is used as rootstock for difficult to grow camellias – it is tough as nails and grows great. Often overlooked, is that it has loads of very pretty dark pink blooms early in the fall before cold damage



is a threat. Also, Kanjiro grows very fast (for instant satisfaction) and the bush (more of a tree in this case) looks great year round.



2 A large dark red is always popular. My wife has seen all kinds of beautiful blooms from Huly'n's old greenhouses and camellia shows in Valdosta and other places but she without question will tell you that **ROYAL VELVET** is her favorite –

and, to be honest, I can't argue with her. Royal Velvet is just a special bloom. It is dark red with a velvety texture and bright gold stamens. It has abundant blooms and the bush is a strong grower with nice foliage and structure. I agree with Kay, Royal Velvet is hard to beat.

3 This choice might be controversial but I am going to put one reticulata in the beginner's package. Reticulata's are (in my opinion) more difficult to grow especially outdoors than japonicas and sasanquas and many are (to be honest) ugly looking bushes. There is an exception and that is **FRANK**



**HOUSER**. For me, it has been the best growing reticulata I have planted in my yard – I cannot say that the bush is just beautiful but it is not bad looking. The reason I must include Frank Houser is that it just has an amazing bloom – and lots of them. Frank Houser or Frank Houser Var either one is great but since the starter package already has a beautiful red in Royal Velvet I am selecting Frank Houser Var as the choice for the beginner's package. Once a homeowner sees a Frank Houser Var bloom in their yard I bet they will be hooked on camellias as well as all their neighbors.

4 Everyone wants a white bloom. I will be honest, white is not my favorite (OK, please don't shoot me) but I realize I am in a minority with this view. Old timers always used Alba Plena as the choice for a white – but, I don't consider it a very strong grower and nursery folks tell me it is hard to root and that it does not grow fast. I am willing to



defer to others on what would be the best white for a beginner's package – but, since I am writing this article I guess I should pick one. Ok, my choice is **SEAFOAM**. Remember, it needs to grow fast and easy, look good as a bush, and have a pretty bloom – I think Seafoam with

its perfect white formal double bloom meets these standards.

**5** What about pink – my goodness, there are hundreds to pick from. In my area older gardens are full of three pink varieties: Debutante, Pink Perfection, and Lady Claire. Nothing is wrong with these but I think we can do better and be more unique. I am going to pick a fairly new variety named **EARLY AUTUMN**.



The Gordy's registered this one and they only register varieties that grow and look great in the yard – and this definitely is true of Early Autumn. A big bonus is that Early Autumn, just like the name implies, blooms in early autumn. It blooms early, profusely, and over an extended time. It is a perfect pink formal double of medium size. The bush could be used for landscape purposes even if it never bloomed.



**6** Another newer variety that has perhaps the prettiest foliage and bush structure of any camellia I have ever seen is a variety that Hulyn Smith registered and named **GEORGIA FIRE**. It is very dark red, a color that is very popular, medium sized

rose form double. If you like dark red flowers then you need a Georgia Fire.

**7** Have you ever noticed that when non-camellian's look at a nice camellia flower they always want to take a sniff of it – then, look just a bit disappointed that they smell nothing. Well, this will not be the case with **HIGH FRAGRANCE**. Jerry Conrad and many others have told me that High Fragrance has more smell than any other variety. I usually can't smell any of the



so-called fragrant camellias (I guess my smeller is bad) but even I can smell a High Fragrance bloom. What's more, a bush in the yard with just a couple of blooms can be smelled (or "smelt" as my wife say's and I always kid her for saying) from several feet away. To further endorse High Fragrance it has a very pretty medium sized peony bloom of ivory pink with deeper pink shading at the edge. Folks in many parts of the world use High Fragrance for rootstock so that shows that it is a very tough and fast grower.

**8-9** Most people really like variegated blooms so we need one or two in the beginner's package. Two names come to my mind for great growing nice looking dependable variegated varieties: #8 **TERRY GILLEY VAR** (top right) and #9 **RENA SWICK VAR** (bottom left)



However, when looking up award winners in the ACS Journals I notice that these two win very few awards. But, remember that we are talking about great yard bushes and flowers that will reward normal homeowners not people that typically enter camellias in a show. I have about 200 camellias planted in my yard and I only have duplicates of about eight. Two of the varieties I have two of are Terry Gilley Var and Rena Swick Var – so, this might tell you how impressed I am with these two as great yard plants.



**10** Everyone needs a **TAMA** (photo below is of Tama Electra) and there are many to choose from. There is Tama Americana, Tama Beauty, Tama Glitters, Tama Electra, Tama Vino, Tama Bambino (yes, a miniature) and several others. The Tama's began in 1947 when an unknown seedling was discovered in a charcoal pit in Japan – it was named Tama-No-Ura because that was the name of the town where it was found. Since then, many other Tama's have been introduced. All Tama's are unique having bright red petals with a white band around the petal edges. Also, Tama's are excellent growing plants and produce many seeds that produce interesting seedlings. I don't think I can single out one Tama variety as the



best – they are all good. If you want things that are different and unique then you want at least one Tama.

**11** Ok, we need a blush pink, or a white fading to pink, or a white washed with pink, or some other similar description for our beginner's package. Nuccio's Nursery introduced two good candidates with Nuccio's Jewell and Nuccio's Pearl. Older varieties such as China Doll, Erin Farmer, and Omega are also excellent candidates as well and there are many others. I could not decide so I did a google search of all of the above and decided I liked **NUCCIO'S JEWEL** the best. I have this one in my yard and while it has not grown real fast it has always looked nice. I even was successful with an air-layer on a Nuccio's Jewel so that also increases my faith that it would be a good choice for a beginner.

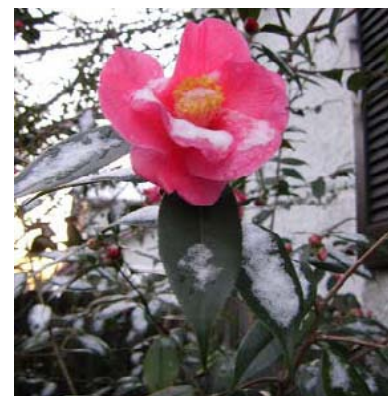


**12** What about a miniature. Hulyn Smith, my camellia mentor, would give me "Heck" (well, he would actually be more specific than that) for choosing a miniature but many people really like them. And, in fact, I am quickly learning to appreciate the miniatures. As landscape plants, and that's the title of this article, miniatures actually make a big statement in the yard. Miniatures typically are just loaded with blooms and most have smaller more pleasing foliage. First, let me warn you that many of the miniatures you typically see winning awards at camellia shows are not the best for landscape purposes. The varieties Tinsie, Lipstick, Fircone, Night Rider, and other miniature varieties that win big at the shows are beautiful but probably best left for the advanced camellia



grower. Miniatures that I am talking about for the landscape must be much easier to grow and keep happy. Here are some miniature varieties that I think are good landscape candidates: Cinnamon Cindy, Fragrant Joy, Fragrant Fairies, Fragrant Pink, Hallstone Spicey, and Spring Festival. These will all put on a mass blooming show much later than the sasanqua varieties. All of the above are non-retic hybrids and if you look at the names closely you will see that most are also fragrant. I am by no means an expert on which of these are the best but I have recently planted a Spring Festival, Hallstone Spicey, and a Cinnamon Cindy in my yard – and, I am very pleased so far – I will flip a coin and pick **CINNAMON CINDY** for this category.

**13** Well, some people think the number 13 is bad luck so let's say this is a "Baker's Dozen" instead. I had planned to stop at twelve but having just experienced some bitterly cold weather I am inclined to pick a cold hardy variety. **CRIMSON CANDLES** is my choice. Crimson Candles is actually a reticulata hybrid but it does not look, grow, or act like the typical reticulata. It resembles a sasanqua that blooms with thousands of dark pink single blooms. However, it blooms in the middle of the winter and is extremely cold hardy. In fact, it blooms up in areas that get plenty of ice and snow and does not seem to be bothered by this weather. There are many photos on the web showing Crimson Candle blooms covered in snow and looking beautiful. Even if cold hardiness is not a concern you will be very pleased with Crimson Candles – it is a great landscape camellia.



Notice the Snow on the open Crimson Candles bloom

OK, that's a baker's dozen and that is enough for a beginner's package. I am sure others could list many other fine camellias that would be great for landscape purposes and for the beginner – there are thousands of camellia varieties you know – but I will submit these as my recommendations. Wouldn't it be nice to see new homes being landscaped with camellias instead of the same old plants one home after another. Wouldn't it be nice to see Camellia Collections or Series at nurseries and garden centers like we typically see Encore Azaleas and KnockOut Roses? Well, why can't there be? Camellias are definitely worthy of such respect and years ago they were prized as the kings and queens of the landscape. Perhaps, if we "camellians" would agree upon and promote a bullet-proof camellia "Beginner's Collection" for landscape purposes this vision will come true.

### Were Can I Buy The Beginner's Collection?

Camellia Sales Through PCC

See website:

[www.pensacolacamellioclub.com](http://www.pensacolacamellioclub.com)

for current inventory.

Call Dick Hooton 850-969-0001  
for further information.

The article above was provided for reprint courtesy of Tommy Smith of the Valdosta Camellia & Garden Club.

## A Camellia Calendar of Love

John Edwards (1915-2007), a Pensacola native and member of the Pensacola Camellia Club since 1937, left the growers of camellias a Camellia Calendar that represents 'tender and loving care' attitude. John loved camellias and expressed that love through his comment, "You can be down, you can be ill, but just go out there (his greenhouse) and see what God has created. It's marvelous! I'd say this is the best therapy that ever was."

**January** – Water well before freeze if extremely dry. Plant new varieties; transplant older plants and complete potting program. Continue 'gibbing' if you have suitable buds. Compete in, and visit, Camellia Shows.

**February** – Time to begin your grafting program. Prune dead wood. Pickup and destroy fallen blooms.\* Compete in, and visit, Camellia Shows.

**March** – Complete grafting program. Fertilize. Complete your pruning program and cut back large plants. Pickup and destroy fallen blooms.\* Compete in, and visit, Camellia Shows.

**April** – Complete fertilization. Time to propagate by air layering plants. Spray (after danger of frost). Pickup and destroy fallen blooms.\*

The attention given to your plants expresses your love for them.

\*(Fallen blooms create spores that cause petal blight.)

-- Adapted from John Edwards' camellia calendar by Gordon E. Eade.  
Appeared in PENSACOLA H&G , November 2007, p.72.

### From the PCC webmaster, Bill Lyford:

Why should PCC members go to the website? There are ideas for camellia care, photographs of PCC activities and history of the organization beginning in 1937. Besides, one can access previous newsletters and see photos of Pensacola varieties. Most members know that there have been over 100 varieties originating from this club. Also, there are direct links to the American Camellia Society website. If ACS has done it better, then we link to their website rather than try to duplicate the effort.

For those who receive the newsletter by e-mail, click [here](#) to go to PCC website. Click [here](#) to go to ACS website.



## **Pensacola Camellia Club (PCC) Statement Of Purpose**

1. To Foster And Maintain An Interest In Camellias And Their Culture
2. To Promote The Study Of Camellias
3. To Provide An Opportunity For Their Exhibition And Appreciation
4. To Aid And Assist In The Standardization Of Camellia Nomenclature
5. To Recognize Those Individuals Who Have Enhanced The Camellia In Our Society

# **PENSACOLA CAMELLIA CLUB FOUNDATION**

## **SPECIAL THANKS TO 2014 FOUNDATION DONORS**

A note of gratitude to the 2014 donors to the Pensacola Camellia Club Foundation. There were eleven cash donations for a total of \$4635.00. The Foundation Trustees and all PCC members greatly appreciate your generosity. Those donors below have helped with a new club van and the new shade house well and also with the Foundation's endowment.

"T" Morris  
Dick & Enid Sloan  
Paul Bruno  
Roger & Ellen Vinson  
Tim & Marguerite Burr  
Dick Hooton  
Joan Blanchard  
George Knight  
Mack Thetford

The Pensacola Camellia Club Foundation provides financial support for the activities of the Pensacola Camellia Club. For example, this year, because we are hosting the American Camellia Society convention, the cost of putting on our annual Camellia Show (including the facility rental, prizes and awards, tables rental, meals for out-of-town judges, and similar expenses) will exceed \$5,000. In years past, our club members had to solicit funds for the Show from local businesses and financial supporters. That was difficult, time consuming, and distasteful to most of our members. Now, thanks in large part to the Foundation's financial support, we no longer have to worry about financing our annual show and can devote our full attention to the show itself. Our Club greatly benefits from having our Foundation.

The Foundation always needs and welcomes your donations and memorial gifts. It is both exempt from federal income taxation, as a 501(c)(3) organization, and qualified to receive charitable contributions and bequests which are tax deductible for federal income, estate, and gift tax purposes.

**FOR MORE INFORMATION CONTACT ONE OF THE FOUNDATION BOARD MEMBERS.**

/s/ Roger Vinson, Chair  
Jack O'Donnell  
Richard Hooton  
Chuck Fosha  
Skip Vogelsang, Trustees